

Ultrasonic-Green Vertical 5-Axis Machining Center

SPV200-5AXIS



Technical Data

Controller

CNC Controller SIEMENS 840D sl (HEIDENHAIN / HNC Optional)

Spindle

Diameter	mm	Φ 100
Max. Speed (Short-Duration)	rpm	30,000
Max. Speed (Long-Duration)	rpm	25,000
Spindle Taper	-	HSK-E32
Motor Power	kW	6
Motor Torque	Nm	2.7
Ultrasonic	-	/
Minimum Quantity Lubrication (MQL)	-	/
Ultrasonic + MQL	-	/

Tool Magazine

Tool Holding Capacity	No. of Tools	40
Max. Tool Diameter (Full)	mm	Φ 50
Max. Tool Length	mm	200
Max. Tool Weight	kg	5
Tool Holder Spec.	-	HSK-E32
Type	-	Chain Type

Miscellaneous

Power Supply Voltage	-	Three-Phase AC,380V/50Hz
Power Capacity	kVA	16
Air Pressure	MPa	0.5-0.7
Total Air Consumption	L/min	>60
Total Weight (incl. Accessories)	kg	4,000
Machine Size (L×W×H)	mm	1,600×2,700×2,080

Travel

X/Y/Z-Axis Travel	mm	280×580×280
A/C-Axis Swivel Range	°	±120/360

Worktable

Dimensions	mm	Φ 200
Max. Load	kg	30
T-Slot (No.×Width)	pcs×mm×mm	4-14H8
Max. Workpiece Size	mm	Φ 200×190

Feed Rate

X/Y/Z-Axis Rapid Speed	m/min.	36/36/36
A/C-Axis Rapid Speed	rpm	100/200

Accuracy

X/Y/Z-Axis Positioning Accuracy	mm	0.007
X/Y/Z-Axis Repeatability	mm	0.004
A/C-Axis Positioning Accuracy	"	8
A/C-Axis Repeatability	"	4
Accuracy Grade		P

Standard Configurations

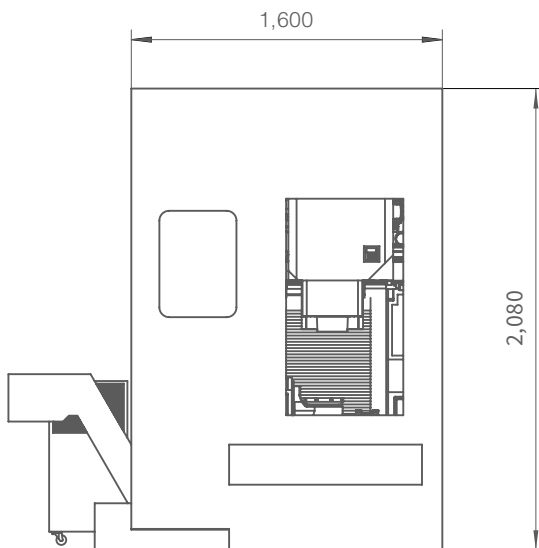
Coolant System	Electrical Cabinet Heat Exchanger
Automatic Centralized Lubrication System	LED Work Light
Spindle Chiller	Three-Color Alarm Light
Contact Tool Setter	Door Safety Interlock
HEIDENHAIN Linear Encoders	5-Axis Simultaneous Machining System (with RTCP Function)
Electric Spindle	Anti-Collision System
Handwheel	Auto Chip Conveyor
Blow Gun	

Optional Configurations

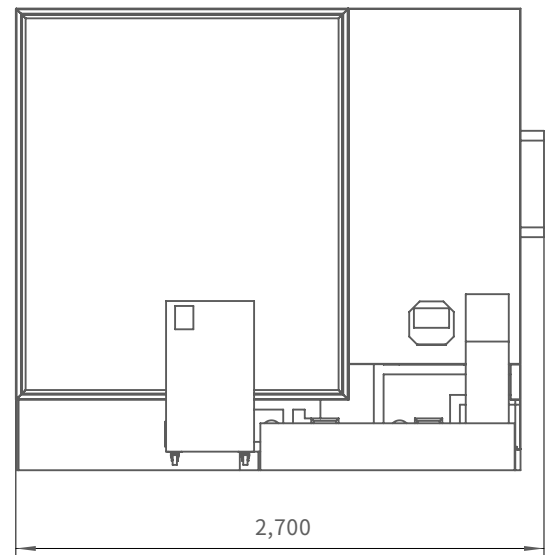
High Precision 3D Probe
Oil-Mist Collector
Laser Tool Setter
Spindle-Through Unit
Ultrasonic Machining System

Floor Plans (Unit: mm)

Front View



Top View



The information given is not binding. The actual product and mutual agreement shall prevail.

Contact: Esther HU +86-138 2607 9999

E-mail: esther.hu@conprofotech.com

Address: No.6 2nd Nanyun Road, Science City, Hi-tech Development Zone, Guangzhou, 510663, P.R.C

SPV200-5AXIS 20231123 VE1.5