



Conprofe Technology Group Co., Ltd.

Website: [www.conprofetech.cn](http://www.conprofetech.cn)

E-mail: [sales-international@conprofetech.com](mailto:sales-international@conprofetech.com)

Tel: +86-20 3861 9084

Address: No.6, 2ndNanyunRoad, Science City,  
Hi-tech DevelopmentZone, Guangzhou, 510663, P.R.C

© 2023 Conprofe Technology Group Co., Ltd. All Rights Reserved - VE3.0



Website



Youtube



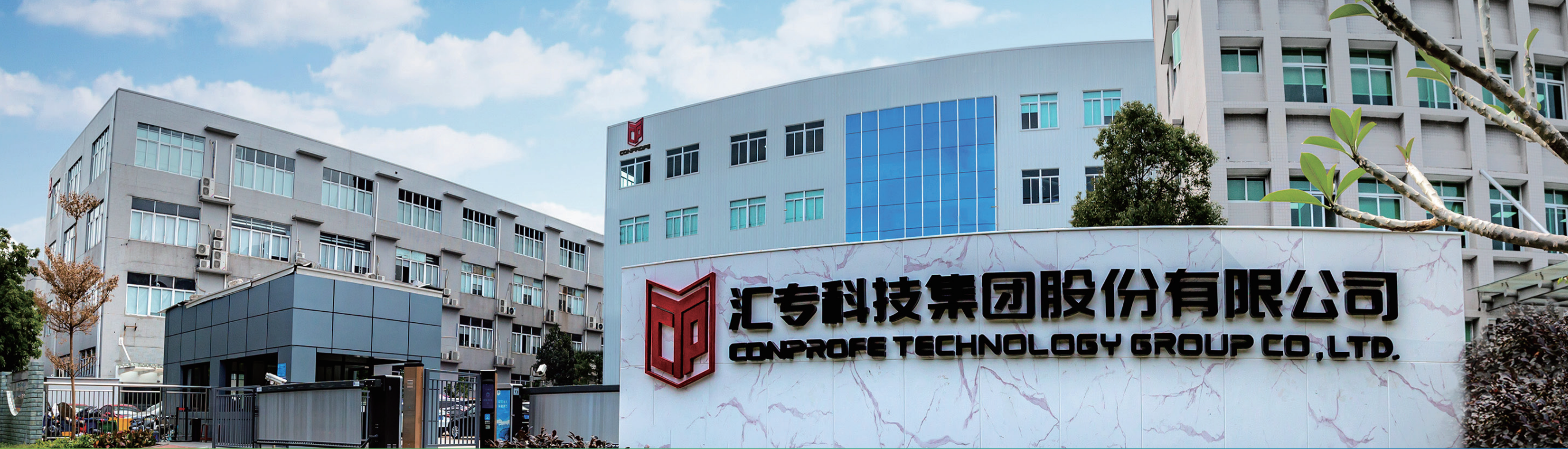
LinkedIn

## Press-Fit Tool Holders

Converging of Global Resources · Professional as Industry Leader



CONPROFE



## "Conprofe" Connotation

Converging of Global Resources

Professional as Industry Leader

# CONPROFE

## About Conprofe

With its roots back to 2003, Conprofe is a Provider of Efficient, Green and Intelligent Manufacturing Solutions and Key Units. It has been holding on to the idea of "Converging of Global Resources, Professional as Industry Leader" in the past two decades. Revolving around "Efficient, Green and Intelligent Manufacturing", the company has achieved a giant leap from parts, units to machines and developed a product portfolio with three major industries - Precision Tools, Key Units and CNC Machine Tools, which covers eight categories of products, including Super-hard Tools, Tapping Tools, Precision Tool Holders, Ultrasonic Technologies, Green Technologies, Precision Units, Ultrasonic-Green CNC Machine Tools and Automation. Its customers have spread across diverse sectors, such as consumable electronics, semiconductors, automotive, aviation & aerospace, medical, education and general precision manufacturing, etc.

Conprofe perseveres in laying a solid foundation in the domestic market while keeping its eyes open to the world. Headquartered in Guangzhou Science City, the company has established sales and service centers in seven domestic regions and forged a network of R&D, sales and service based

in Hong Kong, Taiwan, the United States, South Korea, India and Vietnam, etc. With its products being exported to over 70 countries and regions across six continents, Conprofe's integrated distribution of R&D, production, sales and service around the globe has gradually come into being.

Conprofe persists in innovation-driven developing strategy and owns two National High-tech Enterprises under the Group. The company's Frontier Technology Research Institute (FTRI) and Guangdong Province Engineering Technology Center (GPETC) has developed over 850 core technology patents. Its primary product technologies have reached an internationally advanced level, as assessed and acknowledged by experts led by members of the Chinese Academy of Engineering (CAE). Furthermore, Conprofe has successively been granted the Guangdong Scientific and Technological Progress Award (First Prize 2020, Second Prize 2021), Guangdong Patent Award (Silver), China Patent Award (Excellence) and has been honored as Enterprise with Significant Contribution to Guangdong's Supplies for COVID-19 Prevention and Control, Guangzhou Pioneering Private Enterprise, etc.

# CONTENTS

## 01

BT Series / 05

## 03

SK Series / 07

## 05

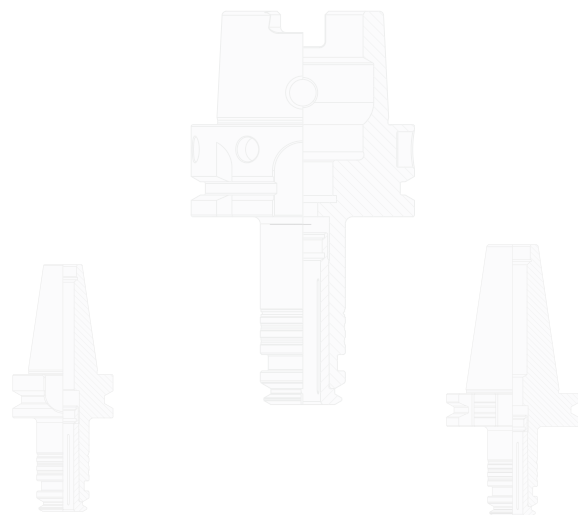
Collets for Press-Fit Tool Holders / 09

## 02

BBT Series / 06

## 04

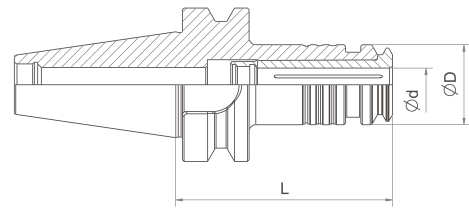
HSK Series / 08



## Press-Fit Tool Holders BT/BBT/SK/HSK Series



## BT Series



Mode	Max. Clamping Diameter d	D	L	Collet
BT30-PC6-50	4	10	50	PC6-[ ]
BT30-PC6-80	4	10	80	PC6-[ ]
BT30-PC10-70	6	16	70	PC10-[ ]
BT30-PC10-100	6	16	100	PC10-[ ]
BT30-PC15-70	10	24	70	PC15-[ ]
BT30-PC25-75	20	40	75	PC25-[ ]
BT40-PC10-80	6	16	80	PC10-[ ]
BT40-PC10-120	6	16	120	PC10-[ ]
BT40-PC15-80	10	24	80	PC15-[ ]
BT40-PC15-120	10	24	120	PC15-[ ]
BT40-PC25-80	20	40	80	PC25-[ ]
BT40-PC25-120	20	40	120	PC25-[ ]
BT40-PC32-90	25	50	90	PC32-[ ]
BT50-PC10-120	6	16	120	PC10-[ ]
BT50-PC15-120	10	24	120	PC15-[ ]
BT50-PC25-120	20	40	120	PC25-[ ]
BT50-PC32-120	25	50	120	PC32-[ ]

① A special clamping unit is used for tool clamping. Collet chuck needs to be ordered separately.

② One through-hole pull stud is purchased for free. Non-standard pull stud needs to be ordered separately.

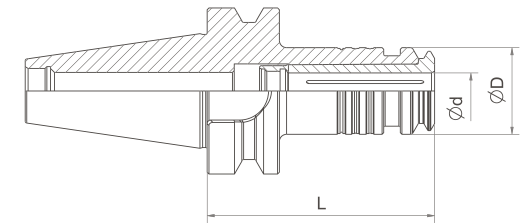
③ Technical parameters are subject to change without further notice.

### Model Description

**BT40 - PC 15 - 80**

Spindle Taper | Collet Specification | Product code | L Dimension

## BBT Series



Mode	Max. Clamping Diameter d	D	L	Collet
BBT30-PC6-50	4	10	50	PC6-[ ]
BBT30-PC6-80	4	10	80	PC6-[ ]
BBT30-PC10-70	6	16	70	PC10-[ ]
BBT30-PC10-100	6	16	100	PC10-[ ]
BBT30-PC15-70	10	24	70	PC15-[ ]
BBT30-PC25-75	20	40	75	PC25-[ ]
BBT40-PC10-80	6	16	80	PC10-[ ]
BBT40-PC10-120	6	16	120	PC10-[ ]
BBT40-PC15-80	10	24	80	PC15-[ ]
BBT40-PC15-120	10	24	120	PC15-[ ]
BBT40-PC25-80	20	40	80	PC25-[ ]
BBT40-PC25-120	20	40	120	PC25-[ ]
BBT40-PC32-90	25	50	90	PC32-[ ]
BBT50-PC10-120	6	16	120	PC10-[ ]
BBT50-PC15-120	10	24	120	PC15-[ ]
BBT50-PC25-120	20	40	120	PC25-[ ]
BBT50-PC32-120	25	50	120	PC32-[ ]

① A special clamping unit is used for tool clamping. Collet chuck needs to be ordered separately.

② One through-hole pull stud is purchased for free. Non-standard pull stud needs to be ordered separately.

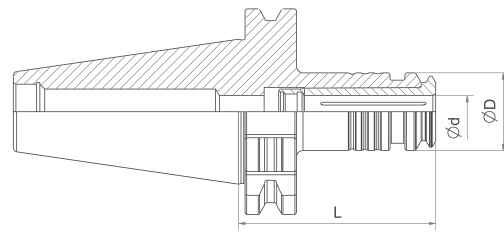
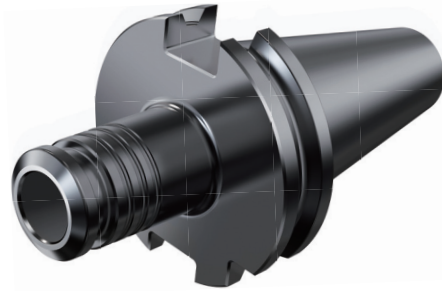
③ Technical parameters are subject to change without further notice.

### Model Description

**BBT40 - PC 15 - 80**

Spindle Taper | Collet Specification | Product Code | L Dimension

## SK Series



Mode	Max. Clamping Diameter d	D	L	Collet
SK30-PC6-50	4	10	50	PC6-[ ]
SK30-PC6-80	4	10	80	PC6-[ ]
SK30-PC10-70	6	16	70	PC10-[ ]
SK30-PC10-100	6	16	100	PC10-[ ]
SK30-PC15-70	10	24	70	PC15-[ ]
SK30-PC25-75	20	40	75	PC25-[ ]
SK40-PC10-80	6	16	80	PC10-[ ]
SK40-PC10-120	6	16	120	PC10-[ ]
SK40-PC15-80	10	24	80	PC15-[ ]
SK40-PC15-120	10	24	120	PC15-[ ]
SK40-PC25-80	20	40	80	PC25-[ ]
SK40-PC25-120	20	40	120	PC25-[ ]
SK40-PC32-90	25	50	90	PC32-[ ]
SK50-PC10-120	6	16	120	PC10-[ ]
SK50-PC15-120	10	24	120	PC15-[ ]
SK50-PC25-120	20	40	120	PC25-[ ]
SK50-PC32-120	25	50	120	PC32-[ ]

① A special clamping unit is used for tool clamping. Collet chuck needs to be ordered separately.

② One through-hole pull stud is purchased for free. Non-standard pull stud needs to be ordered separately.

③ Technical parameters are subject to change without further notice.

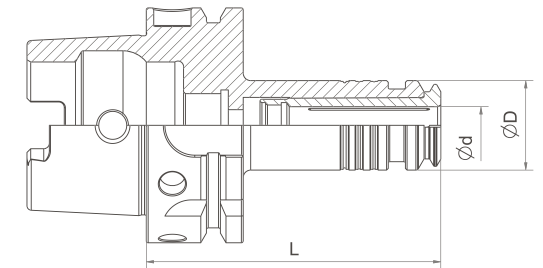
### Model Description

**SK40 - PC 10 - 80**

Spindle Taper      Collet Specification      L Dimension

Product code

## HSK Series



Mode	Max. Clamping Diameter d	D	L	Collet
HSK25E-PC6-45	4	10	45	PC6-[ ]
HSK25E-PC10-55	6	16	55	PC10-[ ]
HSK32E-PC6-50	4	10	50	PC6-[ ]
HSK32E-PC10-60	6	16	60	PC10-[ ]
HSK32E-PC15-75	10	24	75	PC15-[ ]
HSK40E-PC10-65	6	16	65	PC10-[ ]
HSK40E-PC15-75	10	24	75	PC15-[ ]
HSK50A-PC10-80	6	16	80	PC10-[ ]
HSK50A-PC15-80	10	24	80	PC15-[ ]
HSK50A-PC25-100	20	40	100	PC25-[ ]
HSK63A-PC10-80	6	16	80	PC10-[ ]
HSK63A-PC15-80	10	24	80	PC15-[ ]
HSK63A-PC25-100	20	40	100	PC25-[ ]
HSK63A-PC25-150	20	40	150	PC25-[ ]
HSK63A-PC32-100	25	50	100	PC32-[ ]
HSK63A-PC32-150	25	50	150	PC32-[ ]
HSK100A-PC10-90	6	16	90	PC10-[ ]
HSK100A-PC15-90	10	24	90	PC15-[ ]
HSK100A-PC25-100	20	40	100	PC25-[ ]
HSK100A-PC32-110	25	50	110	PC32-[ ]

① A special clamping unit is used for tool clamping. Collet chuck needs to be purchased separately.

② Technical parameters are subject to change without further notice.

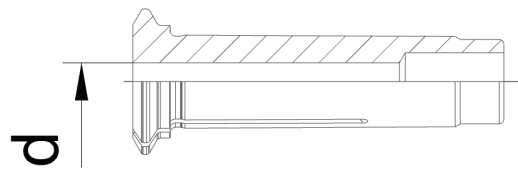
### Model Description

**HSK63A - PC 10 - 80**

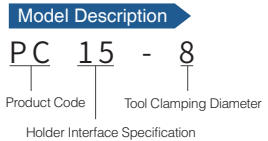
Spindle Taper      Collet Specification      L Dimension

Product Code

# Collets for Press-Fit Tool Holders



Model	Max. Clamping Diameter d
PC6-[ ]	3,4
PC10-[ ]	4,5,6
PC15-[ ]	4,5,6,8,10
PC25-[ ]	4,6,8,10,12,16,20
PC32-[ ]	4,6,8,10,12,16,20,25



BT series  
BBT series  
SK series  
HSK series  
Accessory